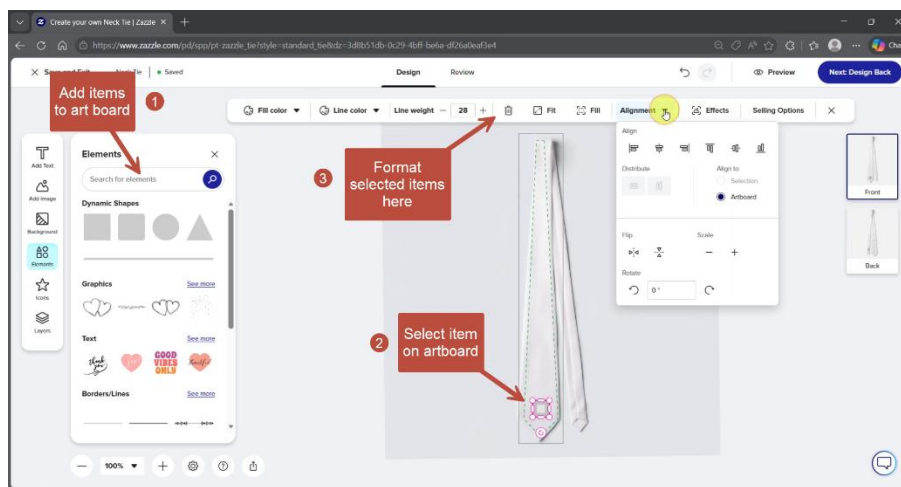


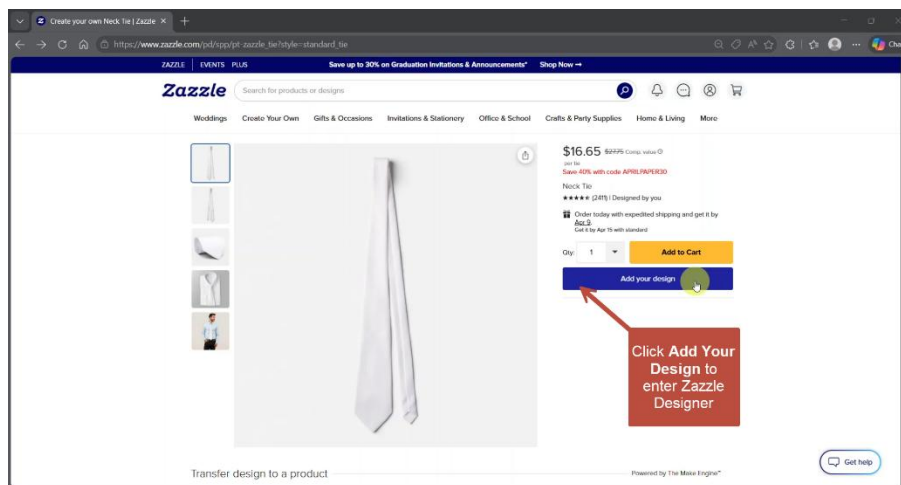
How to Use Zazzle's New Designer Interface — Quick Reference Guide

The new Zazzle designer uses a contextual toolbar — tools appear above the artboard when you select something. If the toolbar disappears, just click on an element to bring it back.

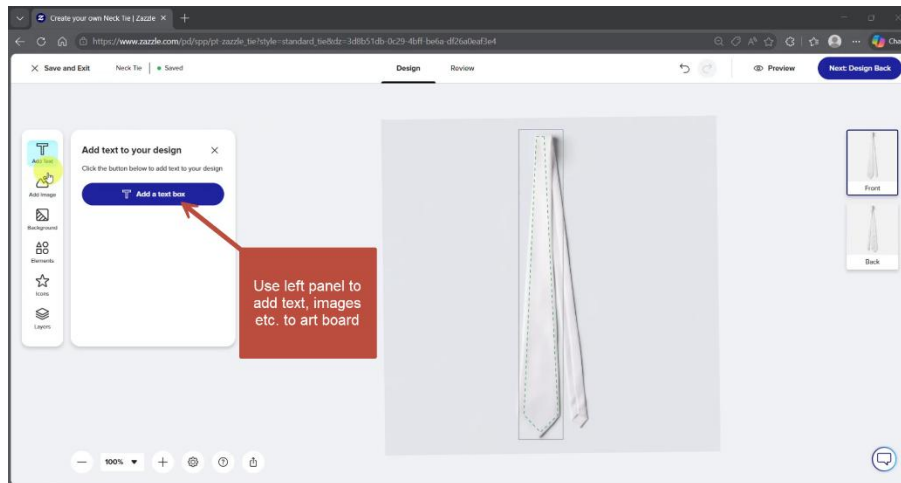


Select Items on the art board to activate the context menu above. Use the panel to the left to add text images and other design items to the art board.

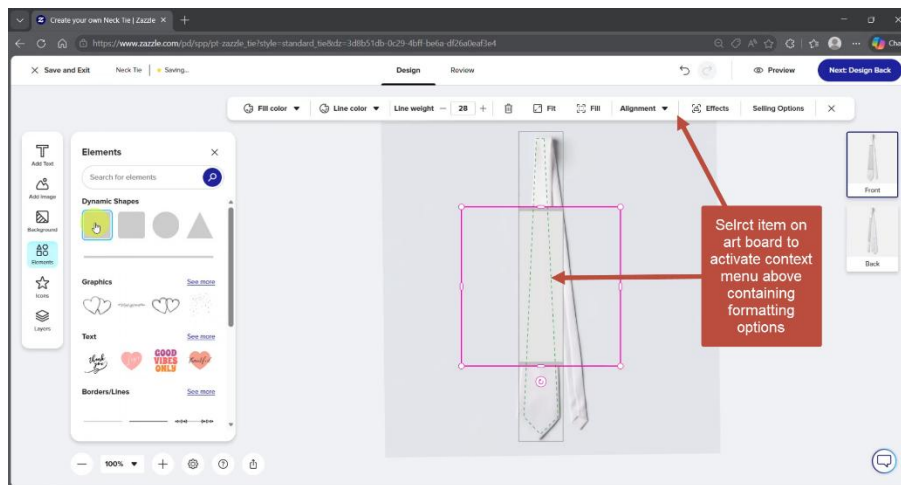
THE ESSENTIAL STEPS



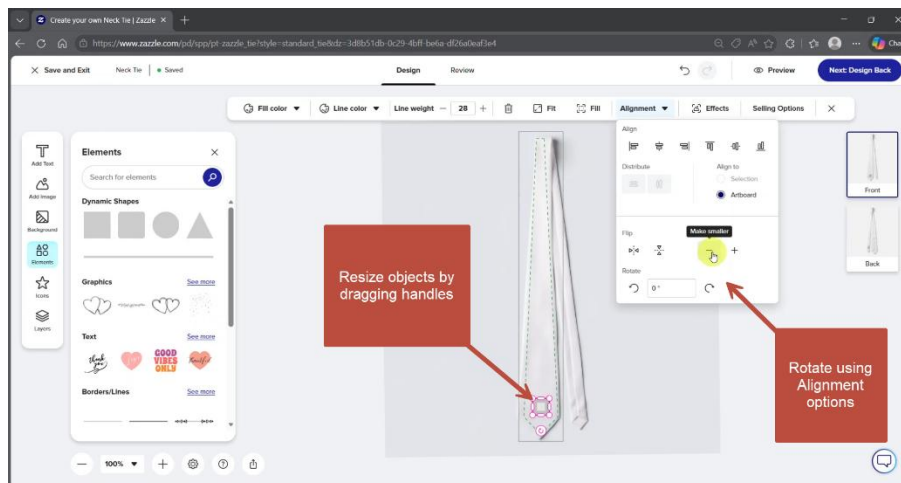
1. Open the Designer Click Personalize or Edit This Design on any Zazzle product page.



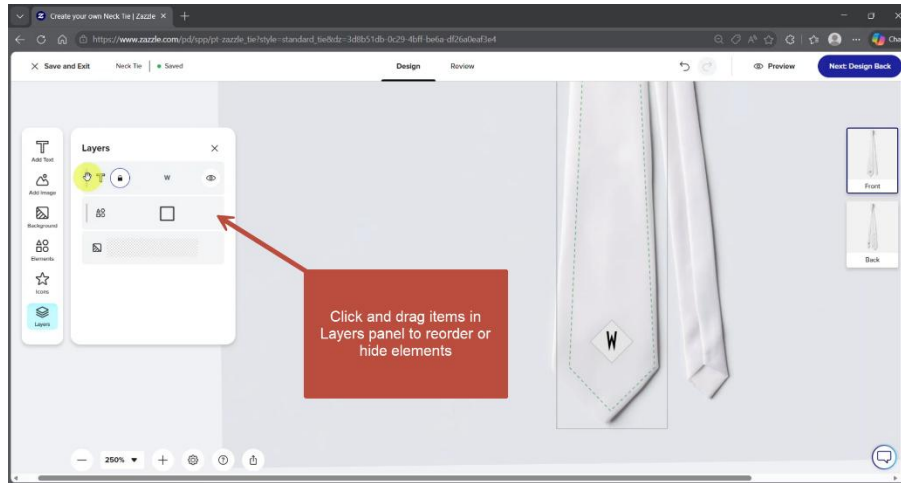
2. Add Elements Use the left panel to add text, upload images, or insert shapes



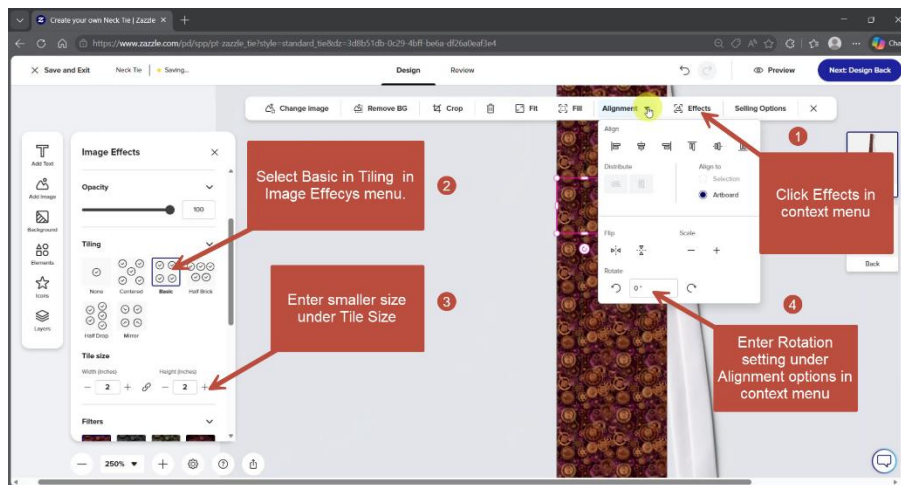
3. Select to Edit Click any element on the artboard. The toolbar appears above with relevant options.



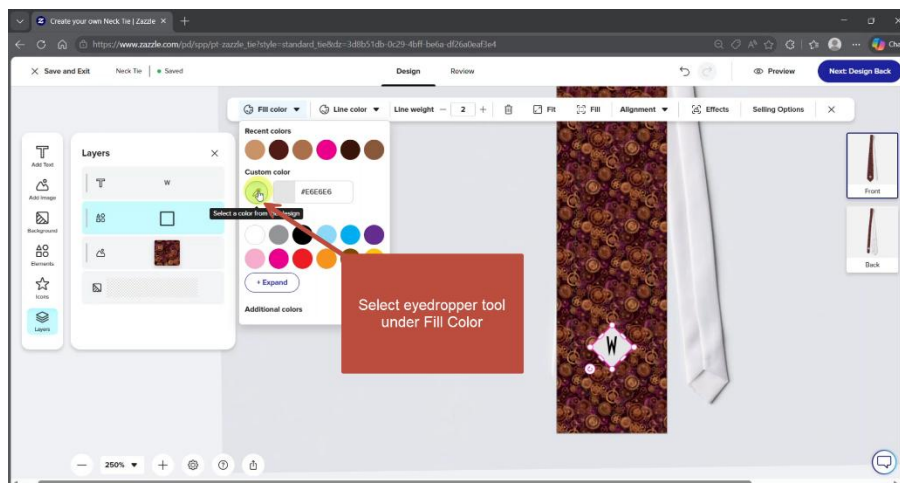
4. Resize and Rotate Drag corner handles to resize. Use the rotation control in the toolbar to adjust angle.



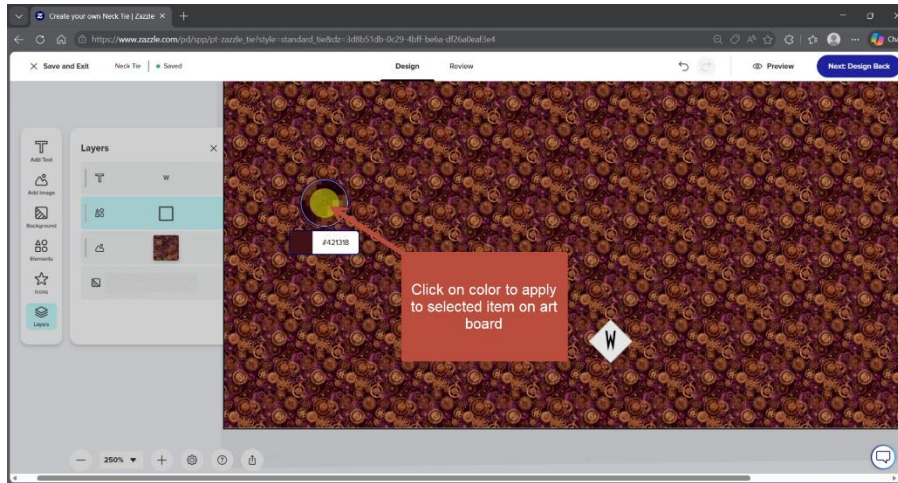
5. Manage Layers Use the Layers panel (left side) to reorder, select, or hide elements.



6. Create a Repeating Pattern Select your image tile → click Effects in toolbar → select Basic under Tiling → adjust Tile Size in left panel → adjust rotation in toolbar.

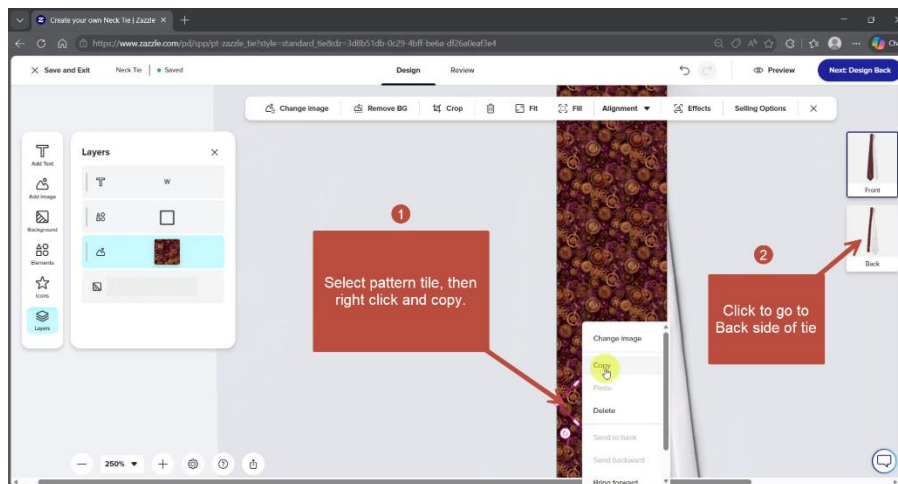


step 1

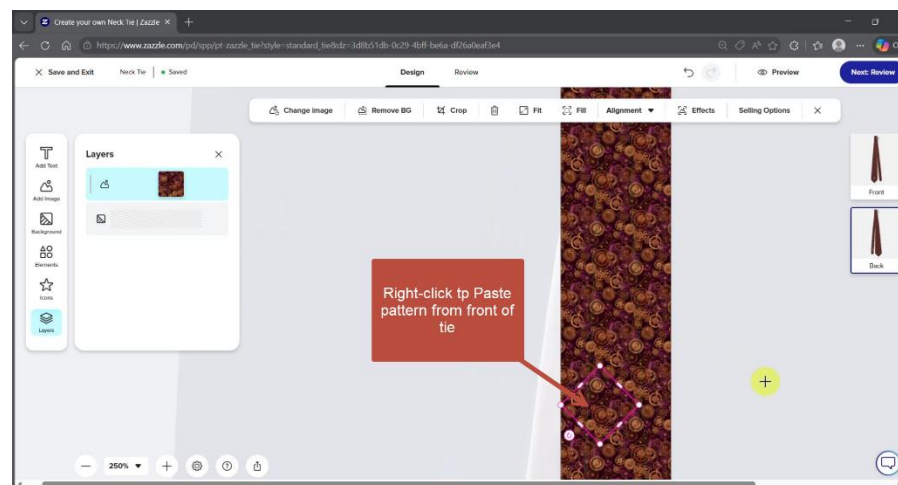


step 2

7. Match Colors Select an element → use the eyedropper tool to sample a color from the artboard

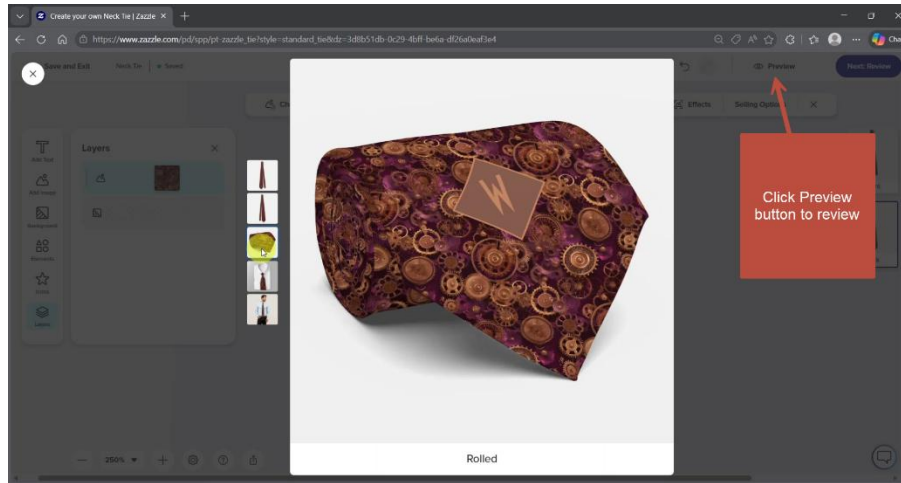


Step 1

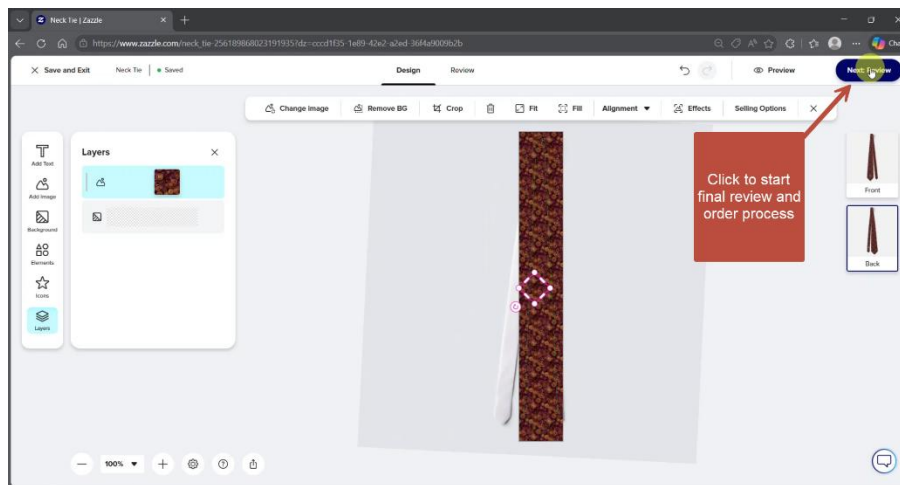


Step2

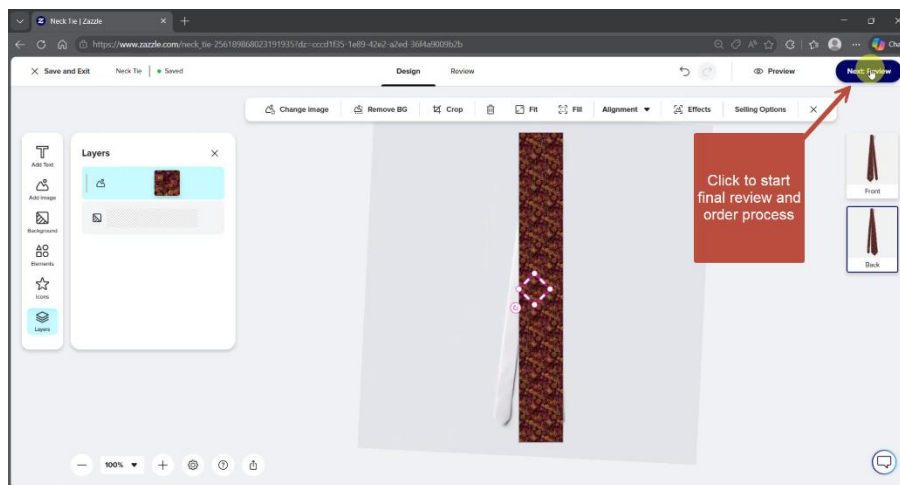
8. Design the Back Copy pattern from front artboard → click back artboard icon (right side) → paste.



9. Preview Click Preview (upper right) to see the finished design before ordering.



Step 1



Step 2

10. Add to Cart Click the blue Next button (upper right). Follow the confirmation steps to complete your order.



MYTIES.NET

QUICK TIPS

- Toolbar missing? Click on any element to bring it back.
 - Can't click an element? Select it in the Layers panel instead.
 - Pattern looking seamy? Reduce tile size until the repeat feels continuous.
 - Effects button not showing? Make sure your image tile is selected first.
-

Full tutorial with video at: myties.net/tutorials